



# AWIA Vehicle

Vehicle fleet monitoring system



Visit us!  
[www.ente.com.pl](http://www.ente.com.pl)



ul. Gaudiego 7  
44-100 Gliwice



+48 32 33 82 200



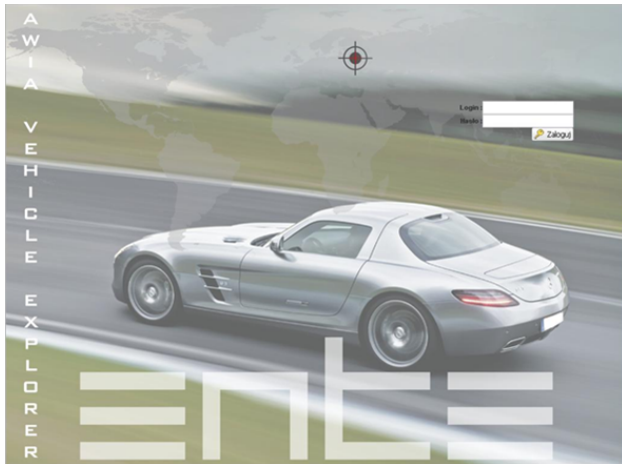
+48 32 33 82 210



[ente@ente.com.pl](mailto:ente@ente.com.pl)



[www.ente.com.pl](http://www.ente.com.pl)



**AWIA VEHICLE** system is not only monitoring, but also a modern solution for the management of fleet vehicles. It is the optimum solution to coordinate logistics and control work.

The proposed solution provides, inter alia:

- ≡ Navigating with the NAVIGO program.
- ≡ Text bidirectional communication between the person operating the vehicle and with dispatcher - the receipt and sending of announcements given by the server.
- ≡ Filling up the electronic card of the vehicle (form for the data capture identical like in the case "paper" of version of the card of the vehicle, data is being sent to the server of data).
- ≡ Cooperation with the module of the location and the AWIA Locator LC data transmission.
- ≡ Presentation of exploitation parameters of the vehicle (level of fuel, turnovers of the engine, speed, and the like).

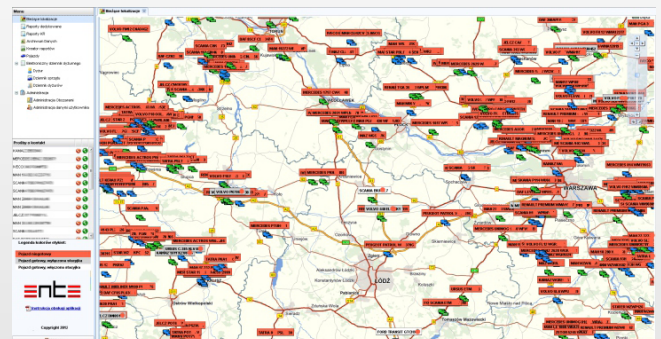
# AWIA Vehicle

## Vehicle fleet monitoring system

AWIA VEHICLE system has a modular design, so it can be expanded at any time of its operation. System configuration and the scope of available functions depends on customer requirements and is tailored to their individual needs.

The basic version consists of the following components:

- ≡ **AWIA Locator LC** devices installed on the vehicle GPS allows you to specify the location of the vehicle and its motion parameters. With built-in GSM module the data is being transmitted from the vehicle to the system
- ≡ **AWIA Vehicle Application Explorer** that allows the user to access the system using a web browser. Its purpose is to display and present measurement data transmitted from the devices installed on the vehicle





## Expendability

Optionally, the system can be extended with such elements as:

- ≡ Probes and fuel flow-meters - allows precise measurement of the amount of fuel in the tank
- ≡ AWIA Terminal - a device with a function of character terminal with keypad and LCD display
- ≡ RFID reader and controller peripherals
- ≡ AWIA Audio - voice transmission module, which enables communication between the driver and the user of the system
- ≡ AWIA RFID - proximity card reader to identify the driver
- ≡ Czytnik pastylek DALLAS - allow alternative means of identification of the driver
- ≡ CCTV Camera - recording the image of any interior or exterior of the vehicle
- ≡ Printer-eg. printing the jobs sent to the driver
- ≡ Diagnostics CAN - allows reading of vehicle operating parameters through the CANbus
- ≡ Input / Digital Output - allows to register the Signals from vehicle by extend system with additional inputs / outputs.\
- ≡ Analog Input Module - allows extension of the system to the vehicle an additional analogue inputs
- ≡ Remote alarm with the receiver - vehicle user can, for example send signal to the control center about the assault

## Module of reporting

Sample reports generated for the user:

- ≡ report of the routes
- ≡ report of the routes divided into corporate and private
- ≡ report of the areas
- ≡ report of the townsreport the fuel consumption
- ≡ report of incidents
- ≡ report of operatorsreport of the fuellings
- ≡ report of over speeding
- ≡ report of downtime
- ≡ report of vehicles work
- ≡ report of User Activityreport of vehicle activity

## Structure of the system

