



AWIA Eko

Vehicle monitoring system
of municipal services



Visit us!
www.ente.com.pl



ul. Gaudiego 7
44-100 Gliwice



+48 32 33 82 200



+48 32 33 82 210



ente@ente.com.pl



www.ente.com.pl

AWIA Eko

Vehicle monitoring system of municipal services



AWIA Eko is a system designed to locate "on-line" and monitoring significant of important parameters of municipal vehicles.

Implementation of the propuse solution:

- ≡ current monitoring (on-line) locations.
- ≡ speeds of vehicles, reading of the place of loading of waste, reading of the place of discharges of waste.
- ≡ the explicit vehicle identification and of status of his work.
- ≡ showing the time of obtaining closing information from the vehicle.
- ≡ access to the unabridged history of routes of vehicles.
- ≡ electronic daily newspaper of services and inspections.
- ≡ identification of the departure of the vehicle beyond monitored area.

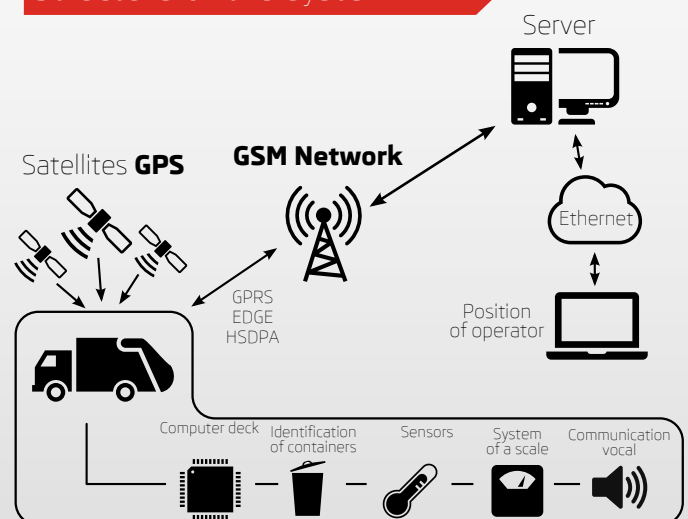
AWIA EKO system has a modular design, si it can be expanded at any time of its operation.i

Expendability

Optional it is possible to develop the system against such elements as:

- ≡ identyfication of buckets
- ≡ identification of bin liners
- ≡ probe of fuel - enabling the precise
- ≡ measurement of the amount of fuel in the tank
- ≡ AWIA Terminal - device having functions of the character terminal with the keyboard and with liquid crystal display, of the RFID card reader and the driver of the peripherals.
- ≡ AWIA audio - module of vocal transmission, enabling the transport between the driver and the user of the system.
- ≡ AWIA RFID - card reader proximity drivers enabling the identification, reader of pills Dallas - drivers enabling an alternative manner of the identification.
- ≡ CCTV camera - recording image from the any space of the vehicle.

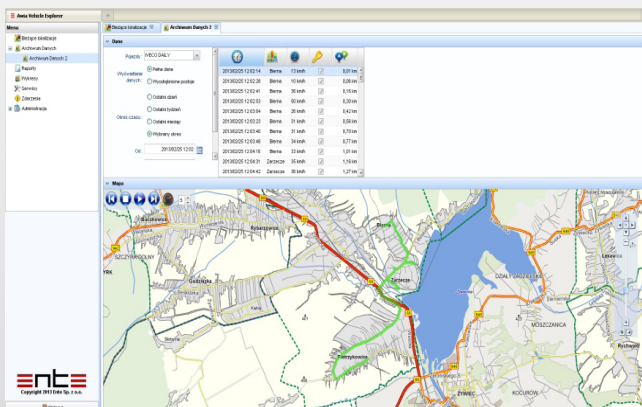
Structure of the system



**Functionality**

- ≡ constant monitoring of vehicles
- ≡ function of the flight recorder - accumulation in the internal flash memory of data from the receiver GPS
- ≡ cordless data transmission (GPRS) to the Centre of the Supervision
- ≡ tracking the position of the vehicle (fleets of vehicles) and his speeds on the digital map
- ≡ complete information of the operating state of the vehicle
- ≡ monitoring working hours of vehicles
- ≡ quick access to reports (routes, stops, events, loadings, ladings, etc.)
- ≡ full history of routes and stops, reporting
- ≡ lead the implementation of the operational schedule
- ≡ monitoring the fuel consumption with the help of the fuel level sensor
- ≡ measurement of the amount of fuel in the tank
- ≡ measurement of working hours of the driver
- ≡ identification of the driver/operator with a contactless RFID cards
- ≡ installation of devices on every type of vehicles, irrespective of the year of the production, the brand or the degree of the use.

The development of the system considerably will increase the scope by the identification of the operator and the system of weights possibilities of analysis and verifications carried out by employees of tasks.

**Expendability**

- ≡ vehicle equipped with the scale will enable to collect the given municipal waste concerning the actual amount produced in the commune,
- ≡ the possibility of performing the legalization provides applying the weight for commercial settling accounts
- ≡ universal structure guaranteeing the assembly on every vehicle
- ≡ the measuring cycle isn't extending the attended time of containers at emptying
- ≡ simple, intuitive service, transfer of data from the weight automatically without the need for the interference an employee is being undergone
- ≡ equipped scale in inklinometr which enables work typical of her on slopes,
- ≡ the connection with the locator provides the GPS preview of data from the on-line weight
- ≡ maximum load from 1 up to 40 ton
- ≡ accuracy of readings already by 5 kg the building development of the weight
- ≡ influences the functionality of the vehicle in no way
- ≡ possibility of the building development of the weight on older types of vehicles
- ≡ big legible terminal of a scale with full

